



Kingpin transforms their accounting

KINGPIN

Kingpin started in 1997 as an integrated marketing agency, delivering measurable solutions to technology companies.

Industry type: Marketing and Advertising

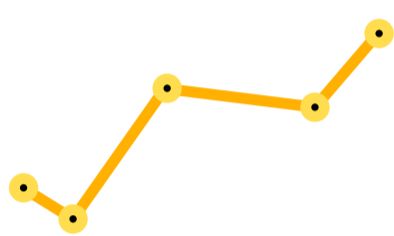
Specialties: Lead Generation, Media, Technology, Audience engagement, Data strategy, Digital, Creative, Telemarketing

No of employees: 25

Location: London, San Francisco

1

The business need



A 20% year-on-year growth



Save time and money



Work smarter

2

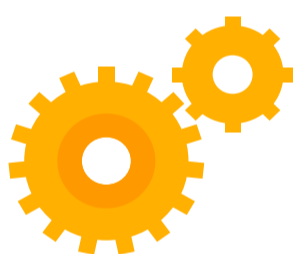
The Solution - Sage Live

Kingpin selected Sage Live after carefully reviewing various other potential solutions. Sage Live offered them rich functionality and represented the biggest value for their investment.



Efficiency

Built on Salesforce platform
Smooth integration between front and back end systems
Seamless integration with a multitude of world class apps



Real-time decisions

Powerful business dashboards on app and main UI
Real-time decisions, anywhere, anytime



Online accounting

Real-time accounting tool
Analyse all cash flow
Create customised journals
Multi-currency, multi-company

3

The Results



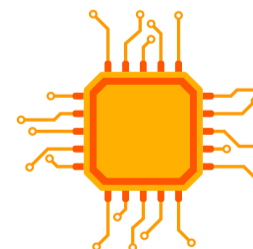
Inspired decisions

Real-time scoreboards, news feeds and notifications
Allows proactive behaviour
Fast decision-making



One-stop shop

Access real-time data quickly
Any information on any device, anytime
Flexible working



Intelligent technology

Easy to use, scalable solution
Perfectly adapted to your infrastructure
Support from the get-go
Automated reports

"Sage Live helps us save time, money and work smarter. It gives us a single view of our customers' data and takes away a lot of the headache of managing separate accounts. For us this is transformational."

James Foulkes, Director & Co-founder, Kingpin

New Tools, Your Rules, with Sage Live.

Connect with us [here](#) or register for a free trial at go.sage.com